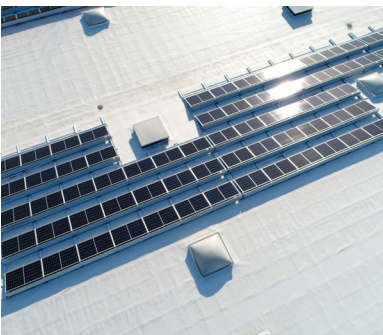


Imper Italia

Established in 1936, Imper Italia is a pioneer in the development and production of TPO membranes. As the undisputed world leader with over 25 years of experience, the group to which Imper Italia belongs has a production capacity of 32 million m². Since 2005, CGMA and IMPER ITALIA have been investing in the development of photovoltaic processes on TPO waterproofness.



SINTOFOIL TPO membrane

- Available in 1.8 or 2.0 mm
- Grey or white to improve the thermal emissivity of the building (cool roof effect)
- White with high reflectivity for better performance
- 20 year warranty
- Durable product (40 years), ecological and recyclable, inert nature, no added plasticizer
- Developed and tested on ribbed steel sheet (classic and long span) and concrete
- Brooft1 (Belgium) and Brooft3 (France) classification for new construction or complete renovation projects (without dismantling the existing membrane)
- Hot air welding without fire risk
- New and renovation projects
- Compatible with all insulation materials and bitumen

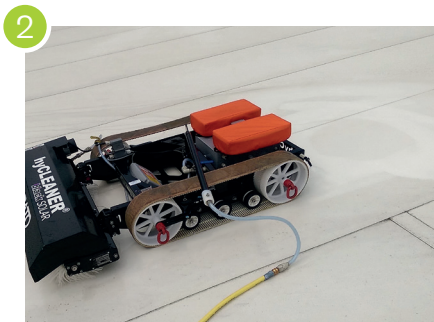


CGMA TPO photovoltaic integration process



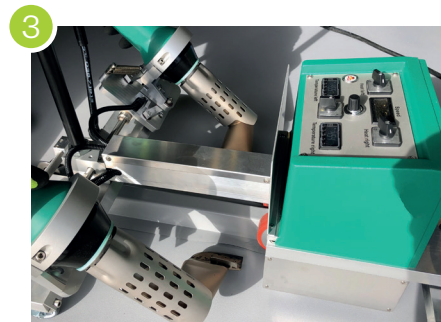
Laying the membrane

- No manual, time-consuming, tedious and risky welding
- Use of standard width strips (1.50 m, 1.05 m and 0.75 m)
- Suitable for renovation without dismantling of the existing membrane



Preparation of the waterproofing (retrofit application)

- Cleaning of the membrane with automated robot
- Reactivation of the membrane



Renting a robot

- Developed in partnership with a leading manufacturer
- Very high speed of execution (welding at 5 lm/minute)
- Risk-free



Thermo welding of the TPO CGMA profile

- Thermo welding with hot air (not flame)
- Extremely light profile 1 kg/lm
- No penetration of the waterproofness
- Automated procedure



PV ready roof

- Optimisation of the investment
- The waterproofing is carried out according to the best practice
- The roof is ready to receive the photovoltaic modules



novotegra system and PV modules installations

- Without ballast, without penetration of the waterproofing membrane
- In accordance with Eurocode EN 1991-1-4
- Dynamically wind tested according to ETAG 006, EN 16002 and EN 12179
- Statically tested according to EN 12316- 2 and EN 12317-2
- Compression and traction tested according to a protocol defined by a certified institution.

Sales office



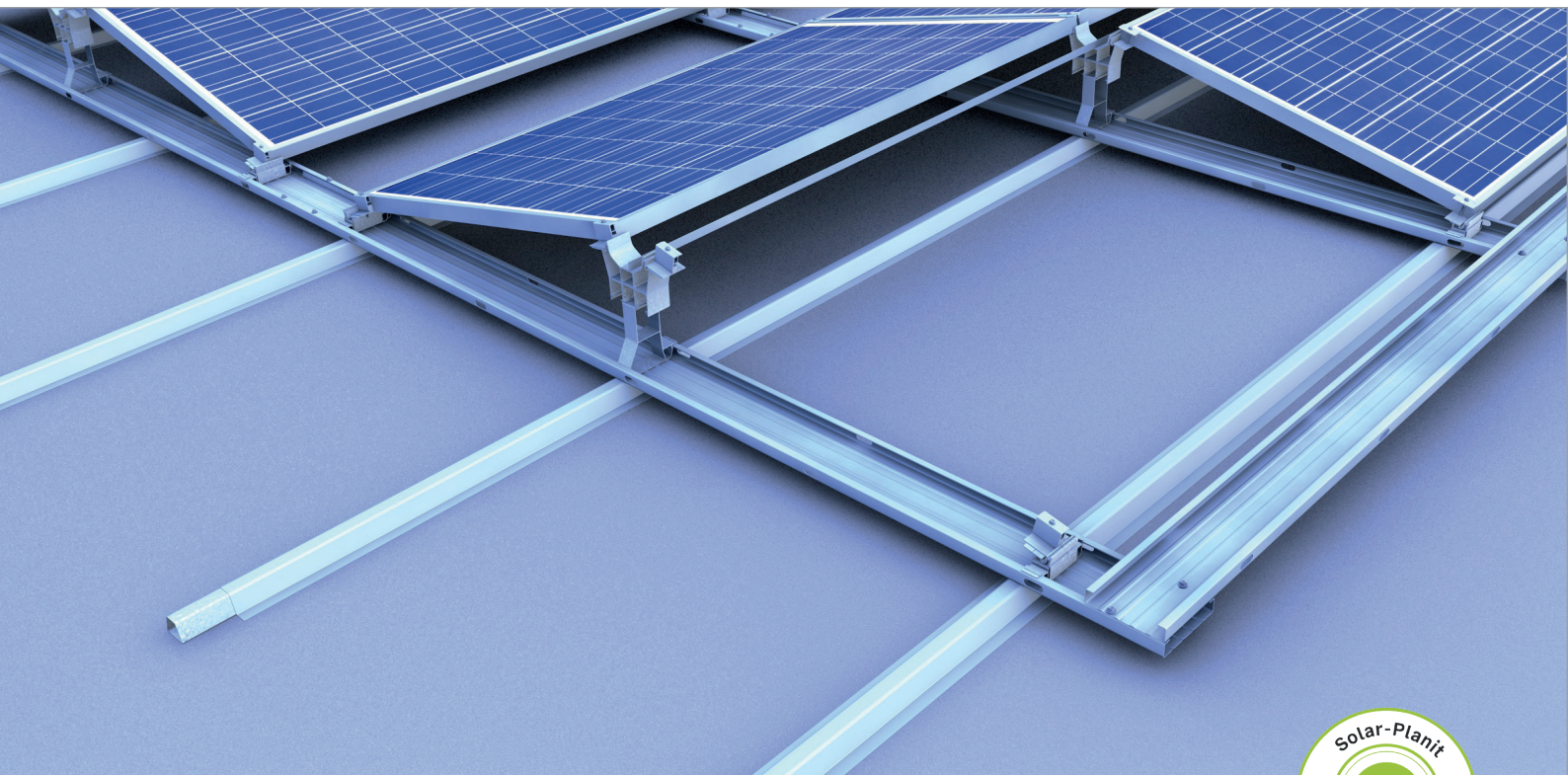
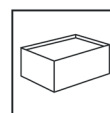
Business Development Europe | Imper Italia Group
E-Mail : info@cgma.be | Phone: + 32 460 96 31 41 | Web : cgma.be



Approved and certified with
novotegra systems

Flat Roof System | East-West System II | TPO

Flat roof system east-west II

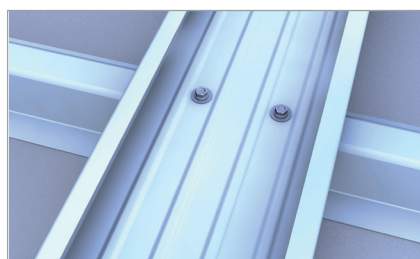


Our EAST-WEST facing solution on TPO roofs

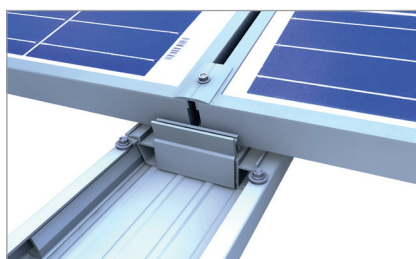
- Without ballast
- Quick and easy to install
- Suitable for use on new membranes or roofs renovation without dismantling the existing membrane
- Better distribution of the production over the day in order to optimise self-consumption
- Optimisation of production with bifacial modules on reflective membrane

Advantages

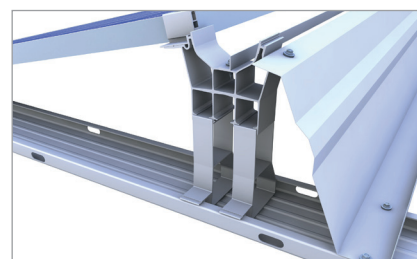
- Wind tunnel tested aerodynamics
- No waterproofness penetration
- Overall roof load less than 10 kg/m²
- 13° tilt angle
- Easy calculation in accordance with Eurocodes
- ETN certified mounting system



Fixation of the base rail to the TPO rail



Base foot in base through



Double module support for high loads

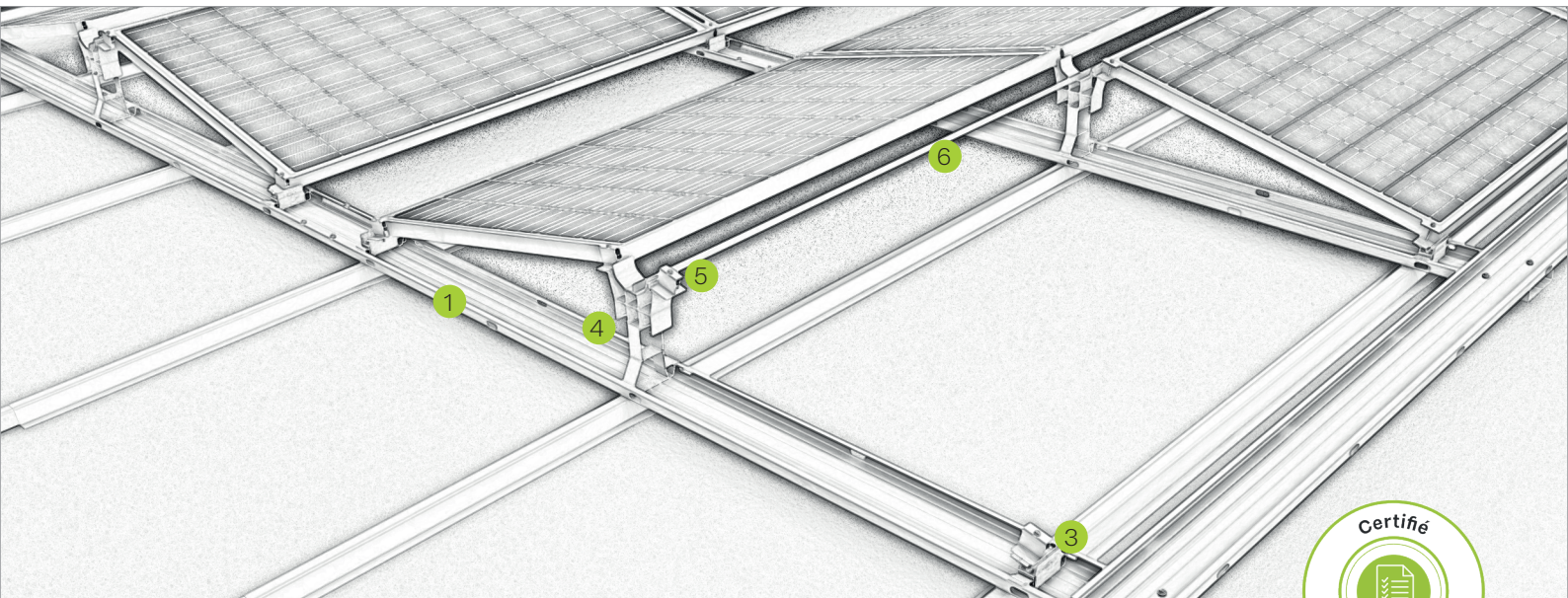
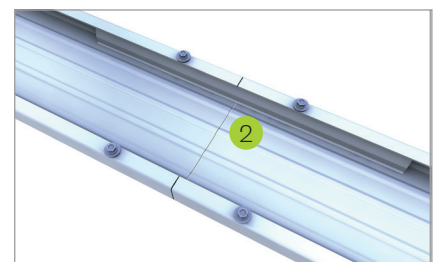
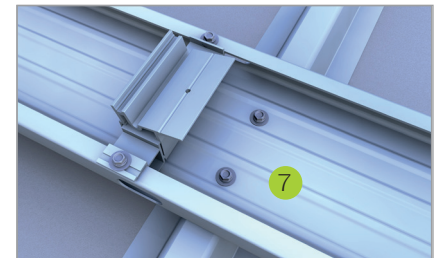


Fig Description

- | | |
|---|------------------------------------------------------------------------------------------------------------------------------------------------------------------------------------------------------------------------------------------|
| 1 | Base rail <ul style="list-style-type: none">• can be used as a cable duct with the optional cover |
| 2 | Rail connections and free-standing fasteners <ul style="list-style-type: none">• connection for panel fields up to 17 m• free-standing connection for the connection of two panel fields of more than 17 m |
| 3 | Base foot <ul style="list-style-type: none">• quick-clip without additional screwing• pre-drilled for easy mounting of the panel clamp |
| 4 | Module support <ul style="list-style-type: none">• quick-clip without additional screwing• pre-drilled for easy mounting of the module clamp |
| 5 | Module clamp <ul style="list-style-type: none">• completely pre-mounted• with self-drilling head for easy screwing in |
| 6 | Support brace <ul style="list-style-type: none">• limitation of the wind load• interconnection of the modules supports |
| 7 | Self-drilling screw <ul style="list-style-type: none">• For fixing the base rail to the TPO rail |



Rail connector kit



Self-drilling screw

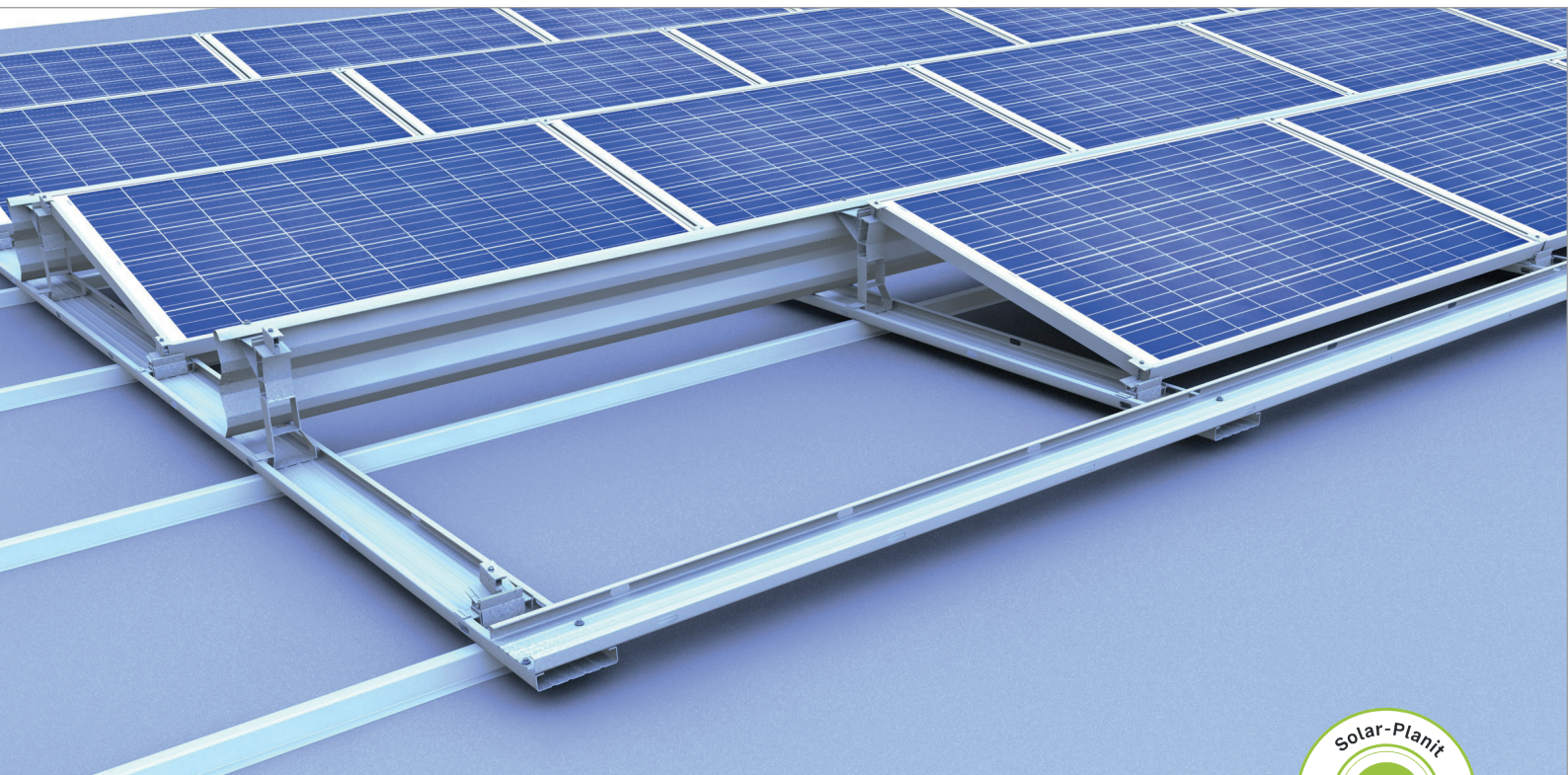
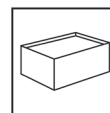
Sales office

BayWa r.e. Solar Systems S.à r.l.
4, Op der Haart | 9999 Wemperhardt
Luxemburg
Tel: +352 27 80 28 20
solarsystems@baywa-re.lu
solar-distribution.baywa-re.lu

novotegra GmbH
Eisenbahnstraße 150 | 72072 Tübingen | Allemagne
Tel. +49 7071 98987-0, info@novotegra.com
www.novotegra.com

Flat roof | System South II | TPO

Flat roof system closed II

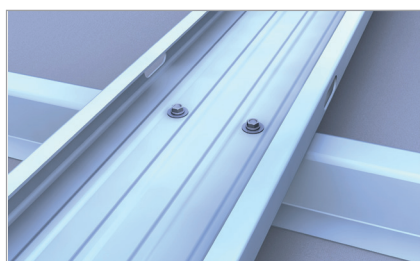


Our south-facing solution on TPO roofs

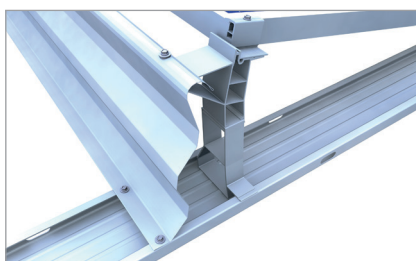
- Without ballast
- Quick and easy to install
- Suitable for use on new membranes or roofs renovation without dismantling the existing membrane
- Optimisation of production with bifacial modules on reflective membrane

Advantages

- Wind tunnel tested aerodynamics
- No waterproofness penetration
- Overall roof load less than 10 kg/m²
- 13° tilt angle
- Easy calculation in accordance with Eurocodes
- ETN certified mounting system



Fixation of the base rail to the TPO rail



Wind deflector and module support



Base foot

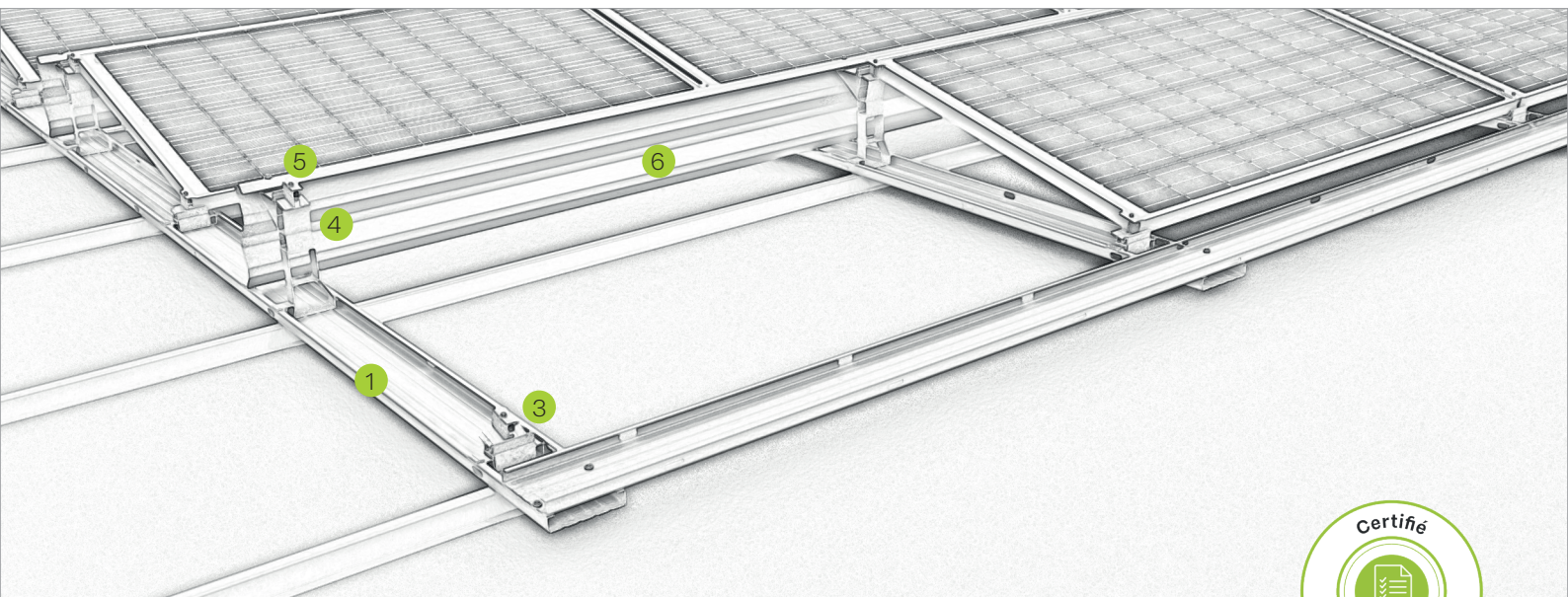
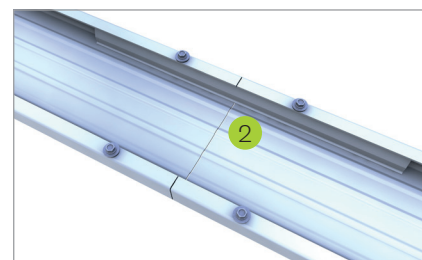


Fig Description

- | | |
|---|---------------------------------------------------------------------------------------------------------------------------------------------------------------------------------------------------------------------------------------------|
| 1 | Base rail <ul style="list-style-type: none"> • can be used as a cable duct with the optional cover |
| 2 | Rail connections and free-standing fasteners <ul style="list-style-type: none"> • connection for panel fields up to 17 m • free-standing connection for the connection of two panel fields of more than 17 m |
| 3 | Base foot <ul style="list-style-type: none"> • quick-clip without additional screwing • pre-drilled for easy mounting of the module clamp |
| 4 | Module support <ul style="list-style-type: none"> • quick-clip without additional screwing • pre-drilled for easy mounting of the module clamp |
| 5 | Module clamp <ul style="list-style-type: none"> • completely pre-mounted • with self-drilling head for easy screwing in |
| 6 | Wind deflector <ul style="list-style-type: none"> • limitation of the wind load • interconnection of high supports |
| 7 | <ul style="list-style-type: none"> • Self-drilling screw • For fixing the base rail to the TPO rail |



Rail connection kit



Self-drilling screw

Sales office

BayWa r.e. Solar Systems S.à r.l.
 4, Op der Haart | 9999 Wemperhardt
 Luxembourg
 Tel: +352 27 80 28 20
solarsystems@baywa-re.lu
solar-distribution.baywa-re.lu

novotegra GmbH
 Eisenbahnstraße 150 | 72072 Tübingen | Allemagne
 Tel. +49 7071 98987-0, info@novotegra.com
www.novotegra.com